



The project is supported by



Funded by the Horizon 2020 Framework Programme
of the European Union

What is research waste?

Malcolm Macleod

Collaborative Approach to Meta-Analysis and
Review of Animal Data from Experimental
Studies and University of Edinburgh

Bergen Public Meeting. 6th February, 2019



What is research waste?

Malcolm Macleod

**Collaborative Approach to Meta-Analysis and Review of
Animal Data from Experimental Studies**

and

University of Edinburgh

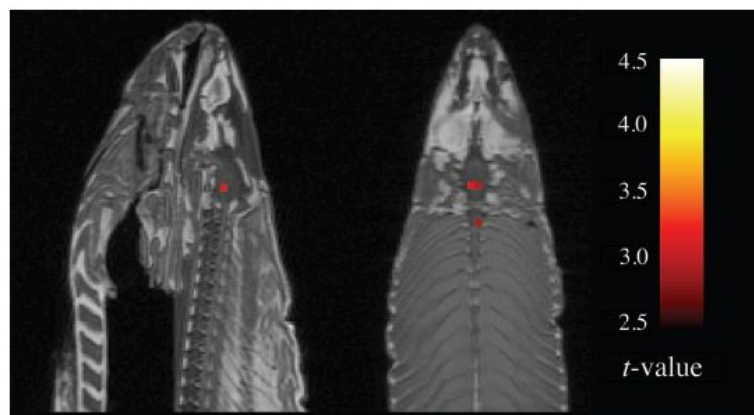
CAMARADES: Bringing evidence to translational medicine



Neural Correlates of Interspecies Perspective Taking in the Post-Mortem Atlantic Salmon: An Argument For Proper Multiple Comparisons Correction

Craig M. Bennett^{1*}, Abigail A. Baird², Michael B. Miller¹ and George L. Wolford³

One mature Atlantic Salmon (*Salmo salar*) participated in the fMRI study. The salmon measured approximately 18 inches long, weighed 3.8 lbs, and was not alive at the time of scanning. It is not known if the salmon was male or female, but given the post-mortem state of the subject this was not thought to be a critical variable.



The task administered to the salmon involved completing an open-ended mentalizing task. The salmon was shown a series of photographs depicting human individuals in social situations with a specified emotional valence, either socially inclusive or socially exclusive. The salmon was asked to determine which emotion the individual in the photo must have been experiencing.

Several active voxels were observed in a cluster located within the salmon's brain cavity (see Fig. 1). The size of this cluster was 81 mm³ with a cluster-level significance of $p = 0.001$.

Either we have stumbled onto a rather amazing discovery in terms of post-mortem ichthyological cognition, or there is something a bit off with regard to our uncorrected statistical approach.



Winner of the 2012 Ignoble Prize for Neuroscience



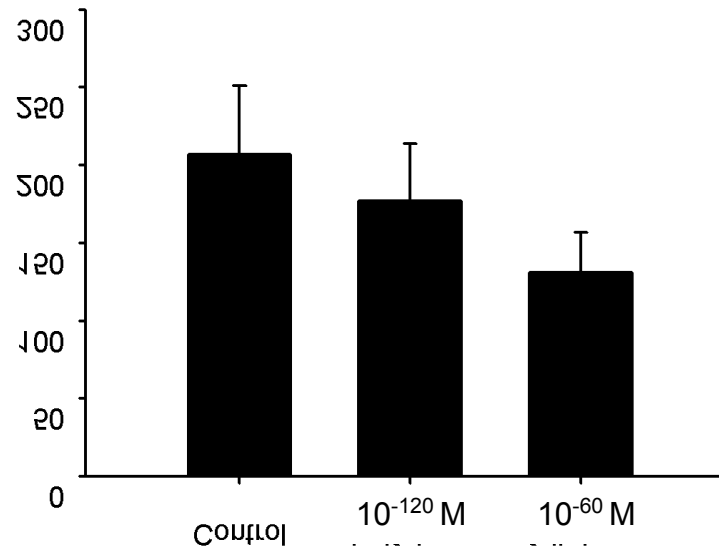
Treatment of experimental stroke with low-dose glutamate and homeopathic *Arnica montana**

W. Jonas¹, Y. Lin², A. Williams², F. Tortella², R. Tuma³

¹ Uniformed Services University of the Health Sciences, Bethesda, Maryland

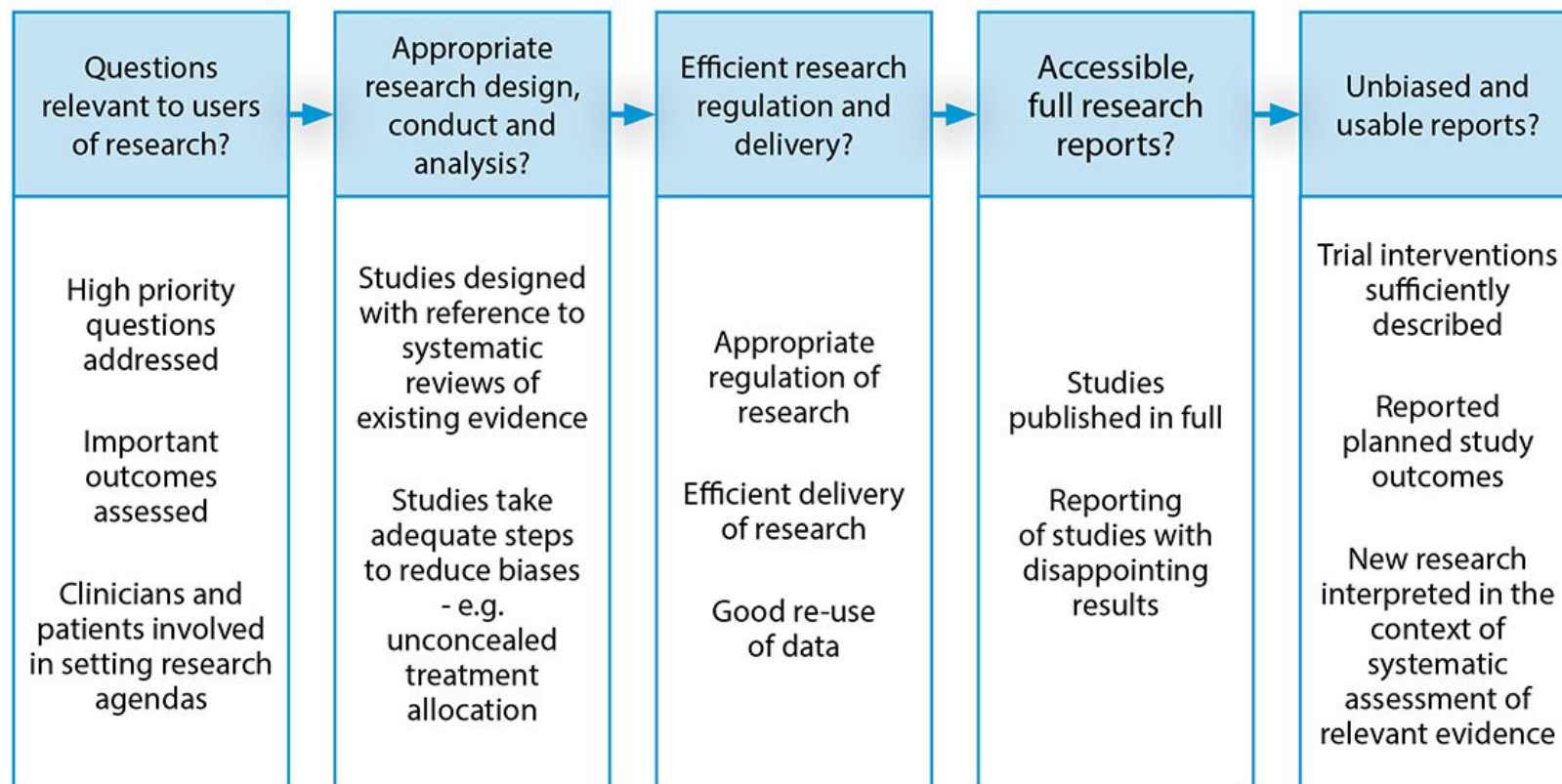
² Walter Reed Army Institute of Research, Washington, D.C.

³ Temple University, Philadelphia, PA





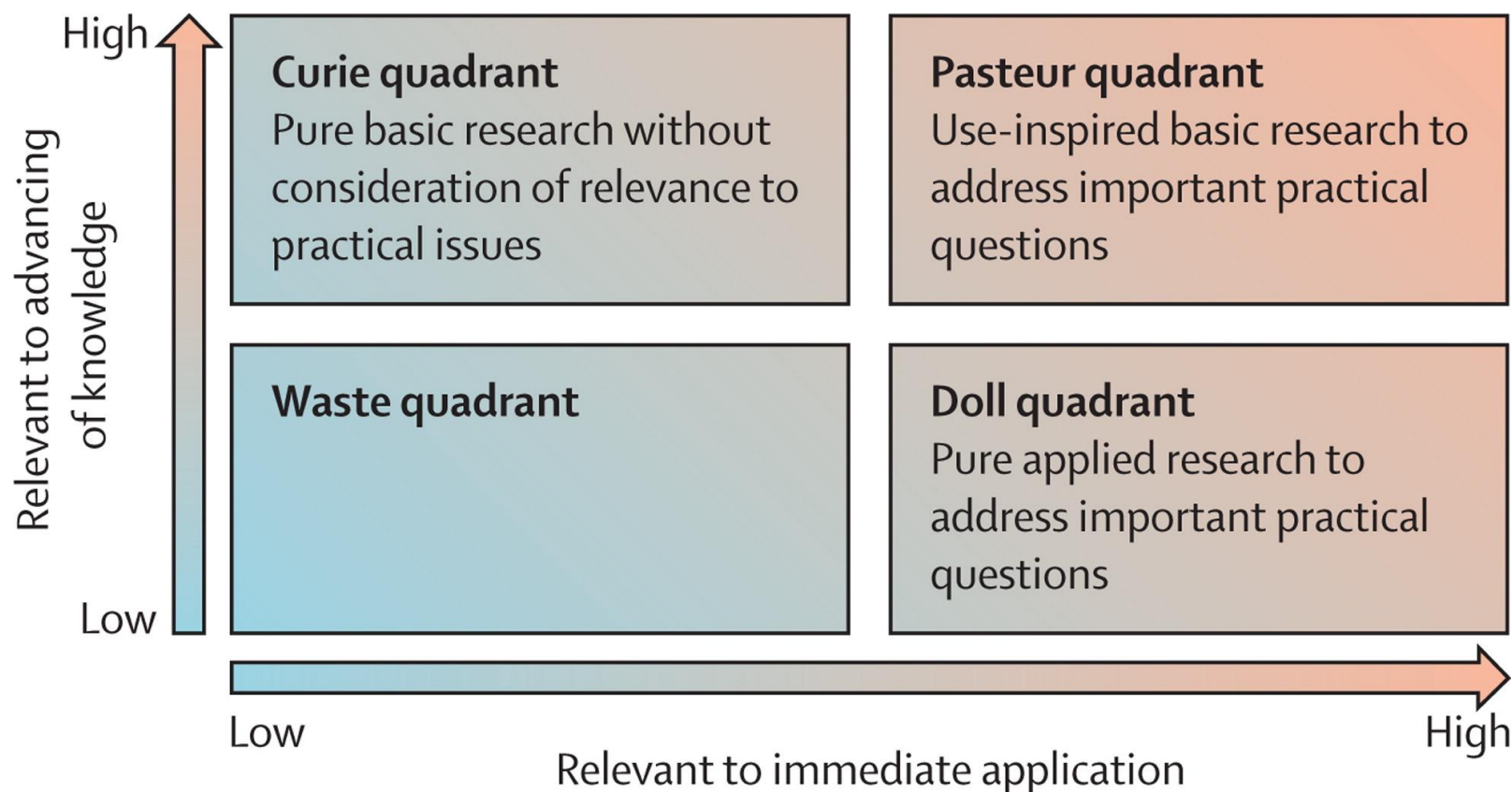
Biomedical research: Increasing value, reducing waste



Macleod et al, Lancet 2014



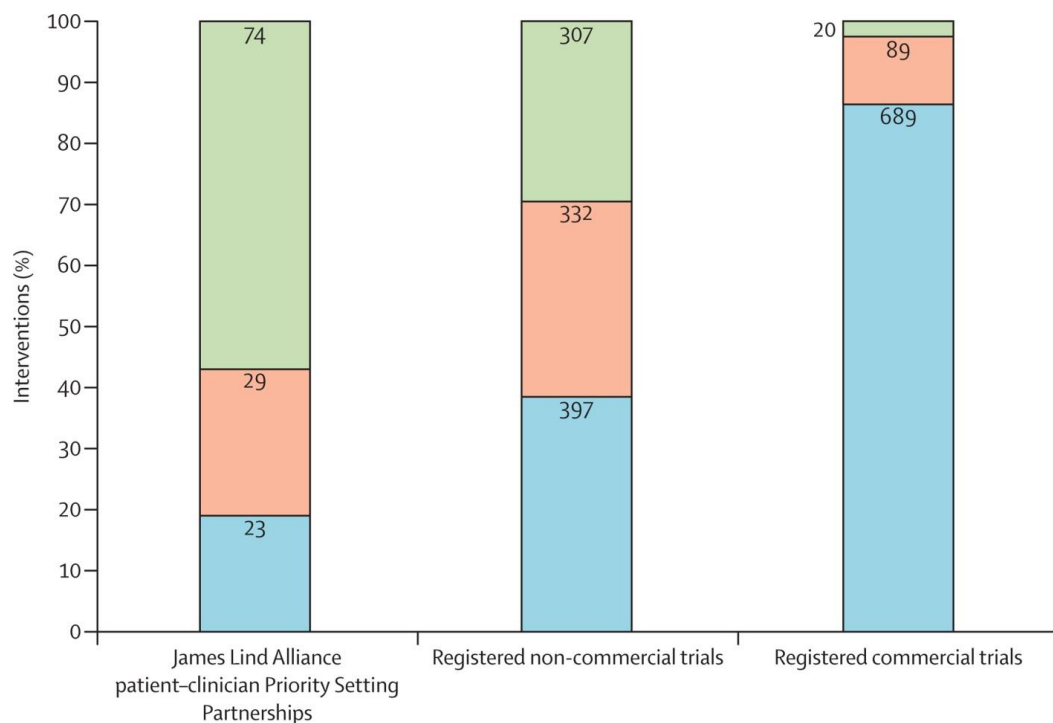
1. Setting research priorities





1. Setting research priorities

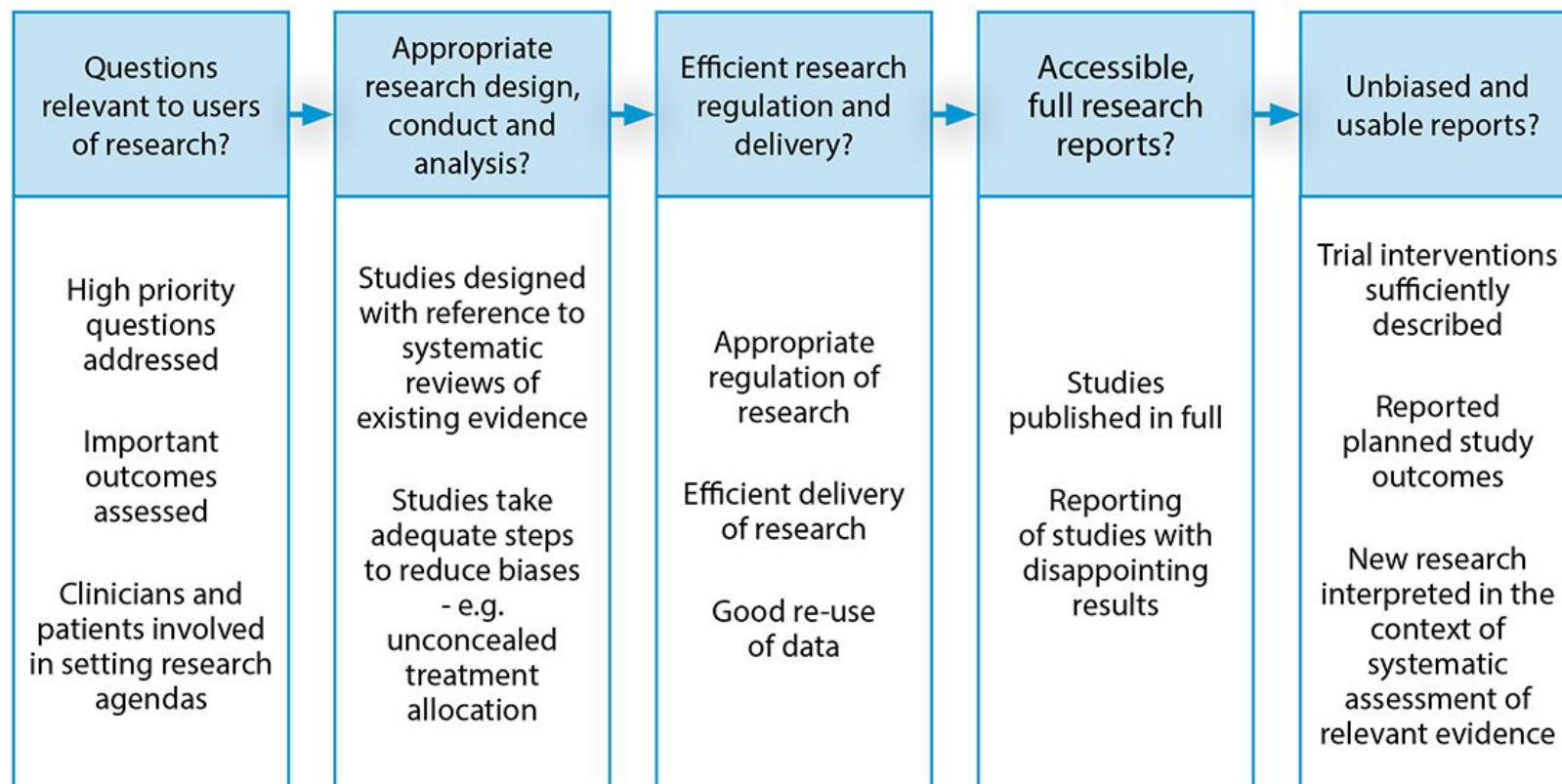
Whose priorities?



- Education and training, service delivery, psychological interventions, physical interventions, exercise, complementary interventions, diet, and other
- Radiotherapy, surgery and perioperative interventions, devices, and diagnostic interventions
- Drugs, vaccines, and biologicals



Biomedical research: Increasing value, reducing waste

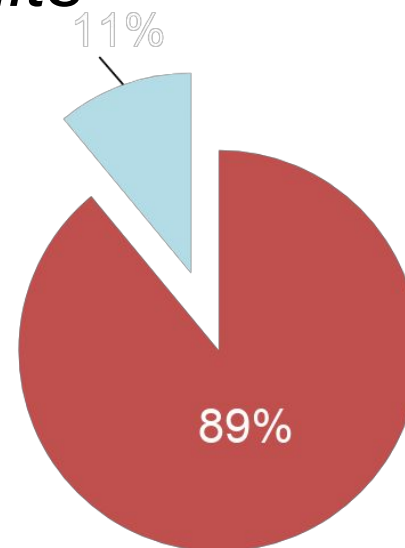
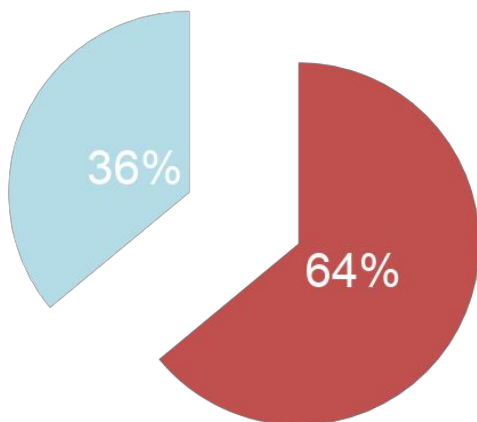


Macleod et al, Lancet 2014



2. Design, conduct and analysis

Failure to replicate published pre-clinical academic results

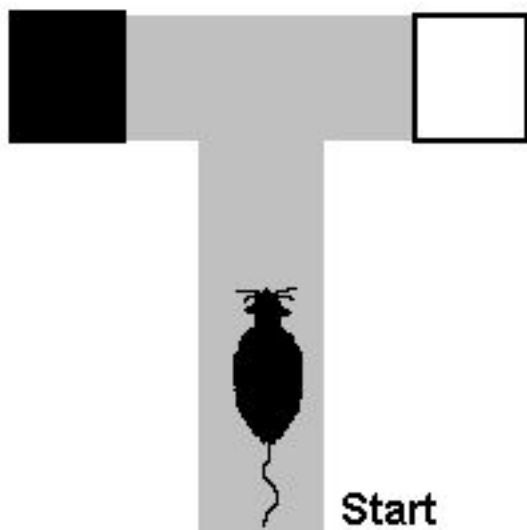




You can usually find what you're looking for ...



- 12 graduate psychology students
- 5 day experiment: rats in T maze with dark arm alternating at random, and the dark arm always reinforced
- 2 groups – “Maze Bright” and “Maze dull”



Group	Day 1	Day 2	Day 3	Day 4	Day 5
“Maze bright”	1.33	1.60	2.60	2.83	3.26
“Maze dull”	0.72	1.10	2.23	1.83	1.83
Δ	+0.60	+0.50	+0.37	+1.00	+1.43

Rosenthal and Fode (1963), Behav Sci 8, 183-9



The scale of the problem

RAE 1173

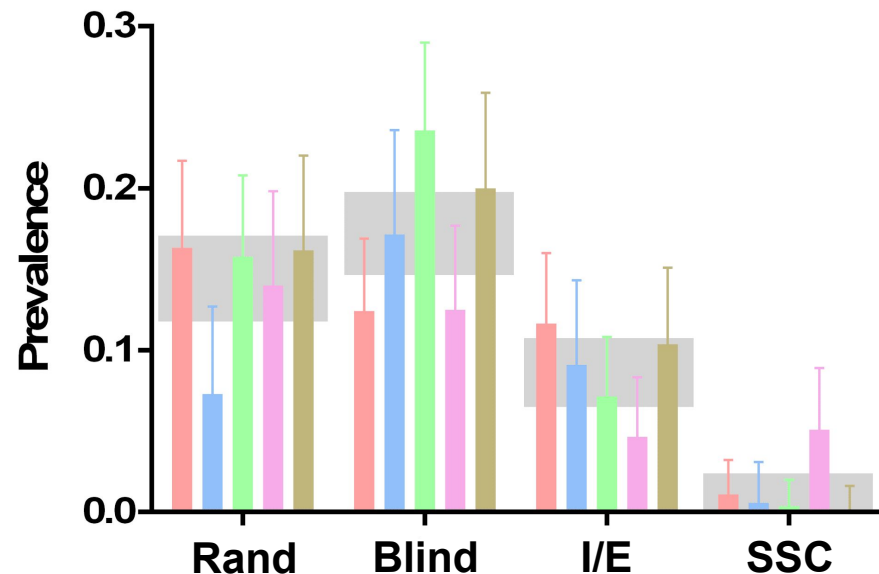


rae2008
Research Assessment Exercise

“an outstanding contribution to the internationally excellent position of the UK in biomedical science and clinical/translational research.”

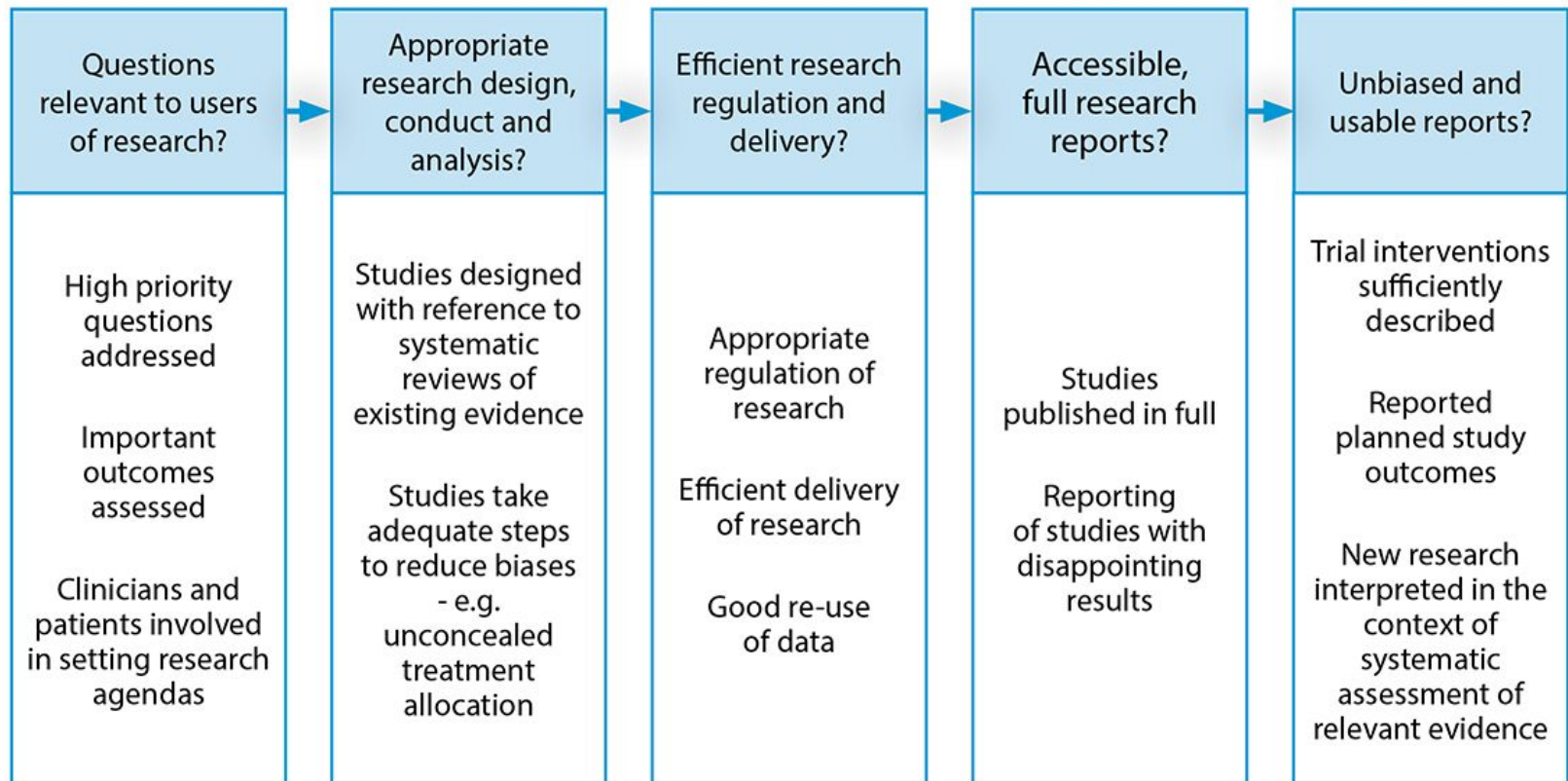
“impressed by the strength within the basic neurosciences that were returned ...particular in the areas of behavioural, cellular and molecular neuroscience”

1173 publications using non human animals, published in 2009 or 2010, from 5 leading UK universities





Biomedical research: Increasing value, reducing waste



Macleod et al, Lancet 2014



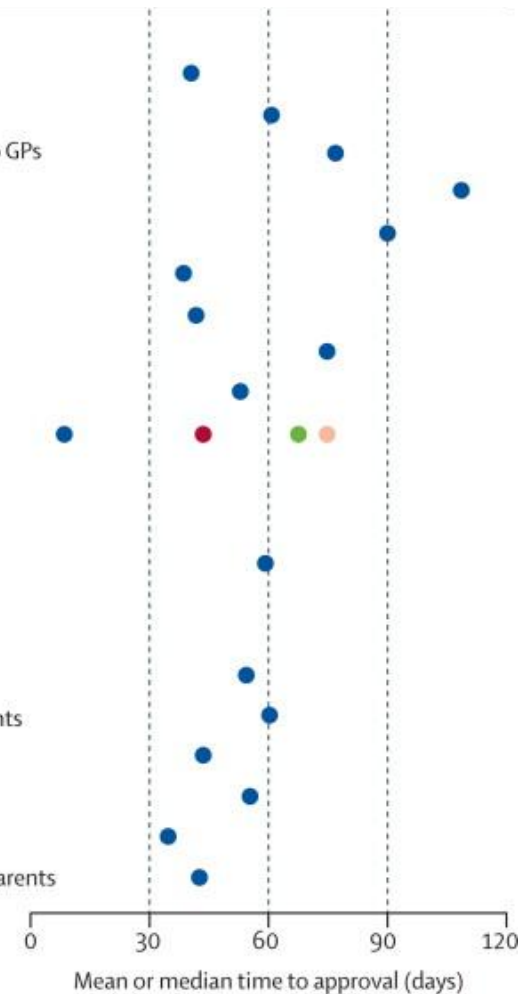
Delays and inconsistency in ethics and governance

Ethics approvals

Black et al	1995	UK	Dermatology and orthopaedics	Questionnaire to outpatients
Garfield et al	1995	UK	Mental health	Examination and questionnaires
Ahmed et al	1996	UK	Influenza vaccination	Retrospective case notes questionnaire to GPs
Redshaw et al	1996	UK	Neonatology	Questionnaire to recent patients
Ah-See et al	1998	UK	Oropharyngeal cancer	Questionnaire to recent patients
Al-Shahi Salman et al	1999	UK	Neuroscience	Observational cohort
Maskell et al	2003	UK	Cardiology	Intervention RCT
Sarson-Lawrence et al	2004	Australia	Cancer	Multiple RCTs
Dziak et al	2005	USA	Women's health	Questionnaire to primary care patients
Lambers Heerspink et al	2008	USA local, USA central, Australia, Europe	Diabetic nephropathy	Intervention RCT
Geldenhuys et al	2013	South Africa	Tuberculosis	Multiple vaccine RCTs

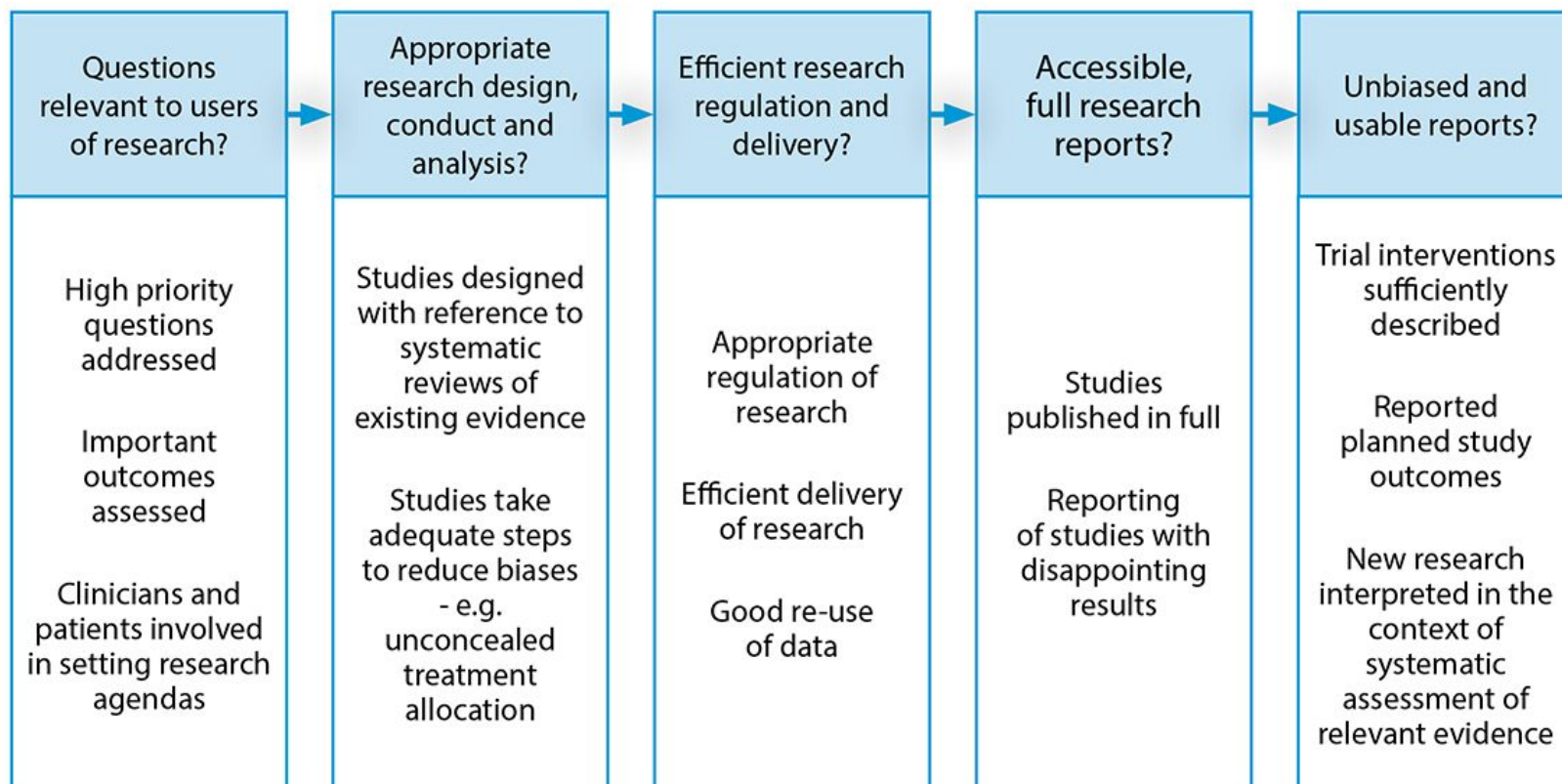
Governance approvals

Dumville et al	2004	UK	Not stated	Intervention RCT
Elwyn et al	2005	UK	Gastroenterology	Questionnaire to recent endoscopy patients
Al-Shahi Salman et al	2007	UK	Neuroscience	Four RCTs
Kielmann et al	2007	UK	Occupational health	Survey of staff
Vajdic et al	2008	Australia	Cancer	Intervention RCT
Mallick et al	2009	UK	Childhood stroke	Case notes review and questionnaire to parents





Biomedical research: Increasing value, reducing waste



Macleod et al, Lancet 2014

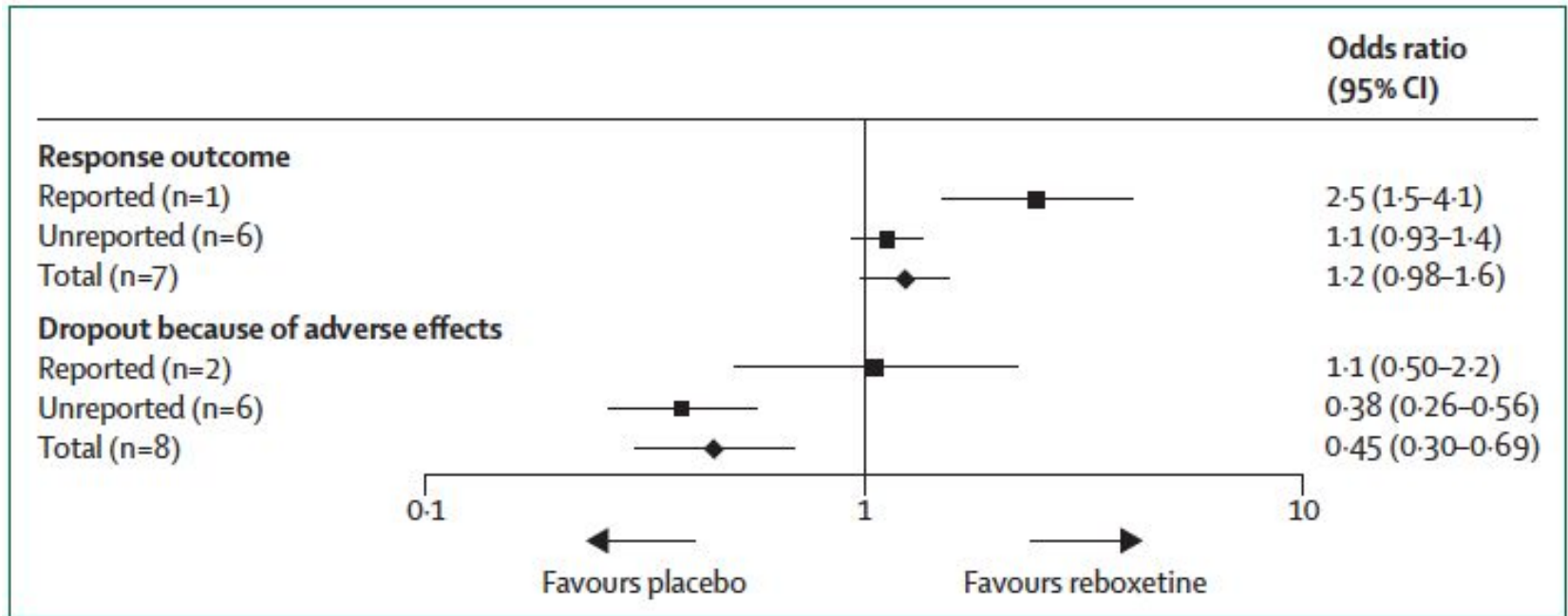
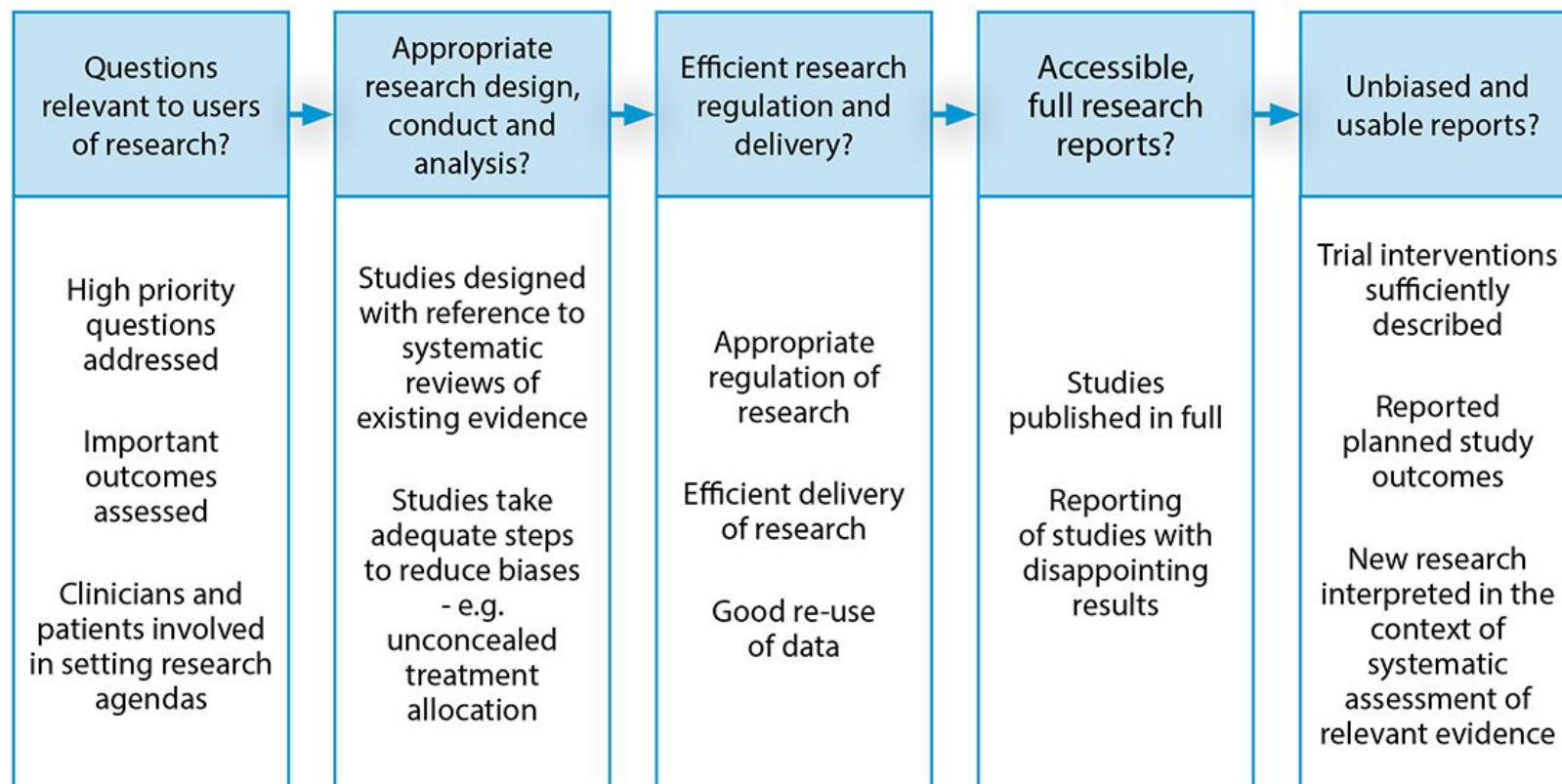


Figure 3: Results of a meta-analysis of reported and unreported randomised trials of reboxetine versus placebo for acute treatment of major depression
 Data used to create this figure from Eyding et al.¹⁸



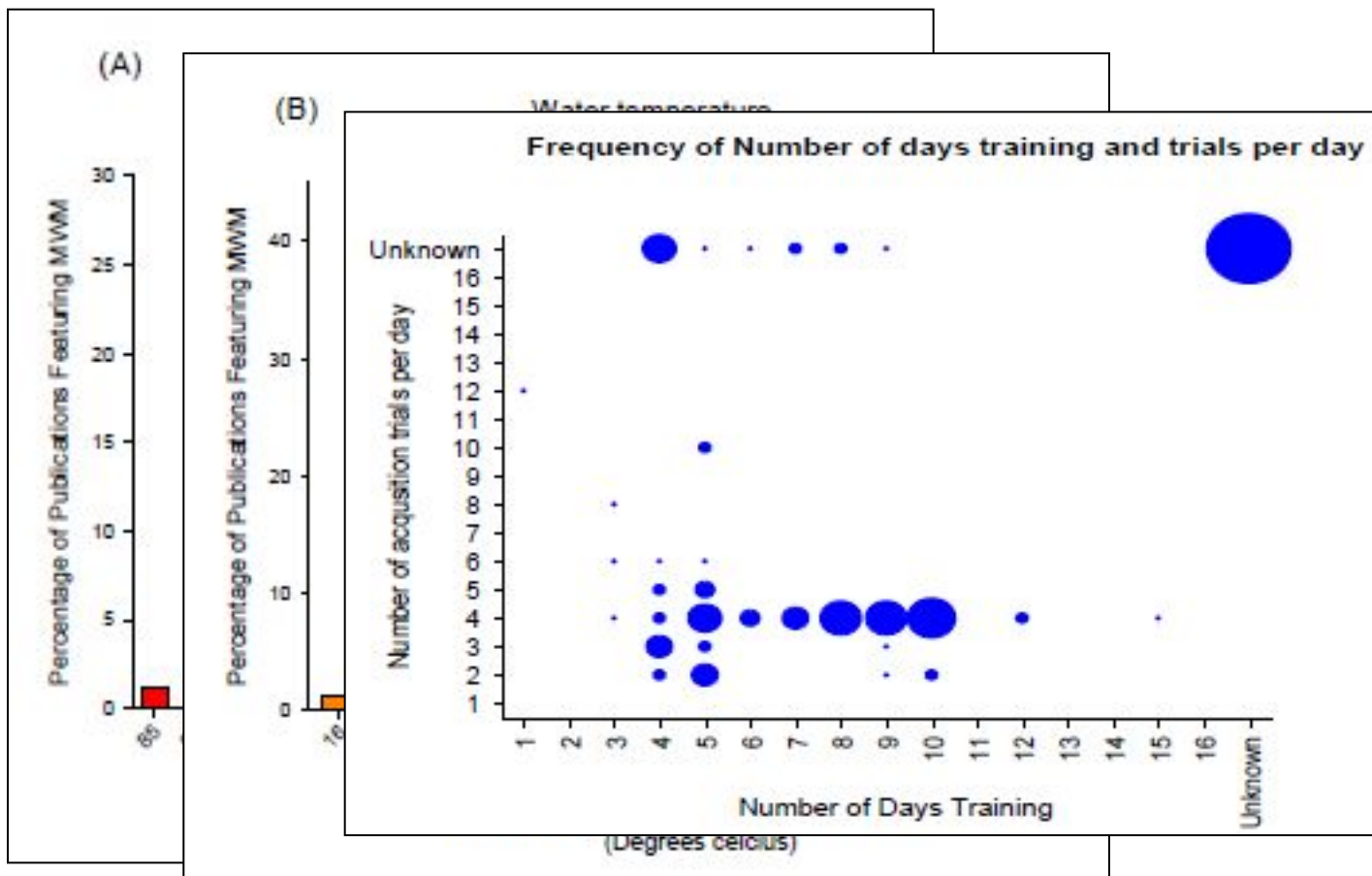
Biomedical research: Increasing value, reducing waste



Macleod et al, Lancet 2014

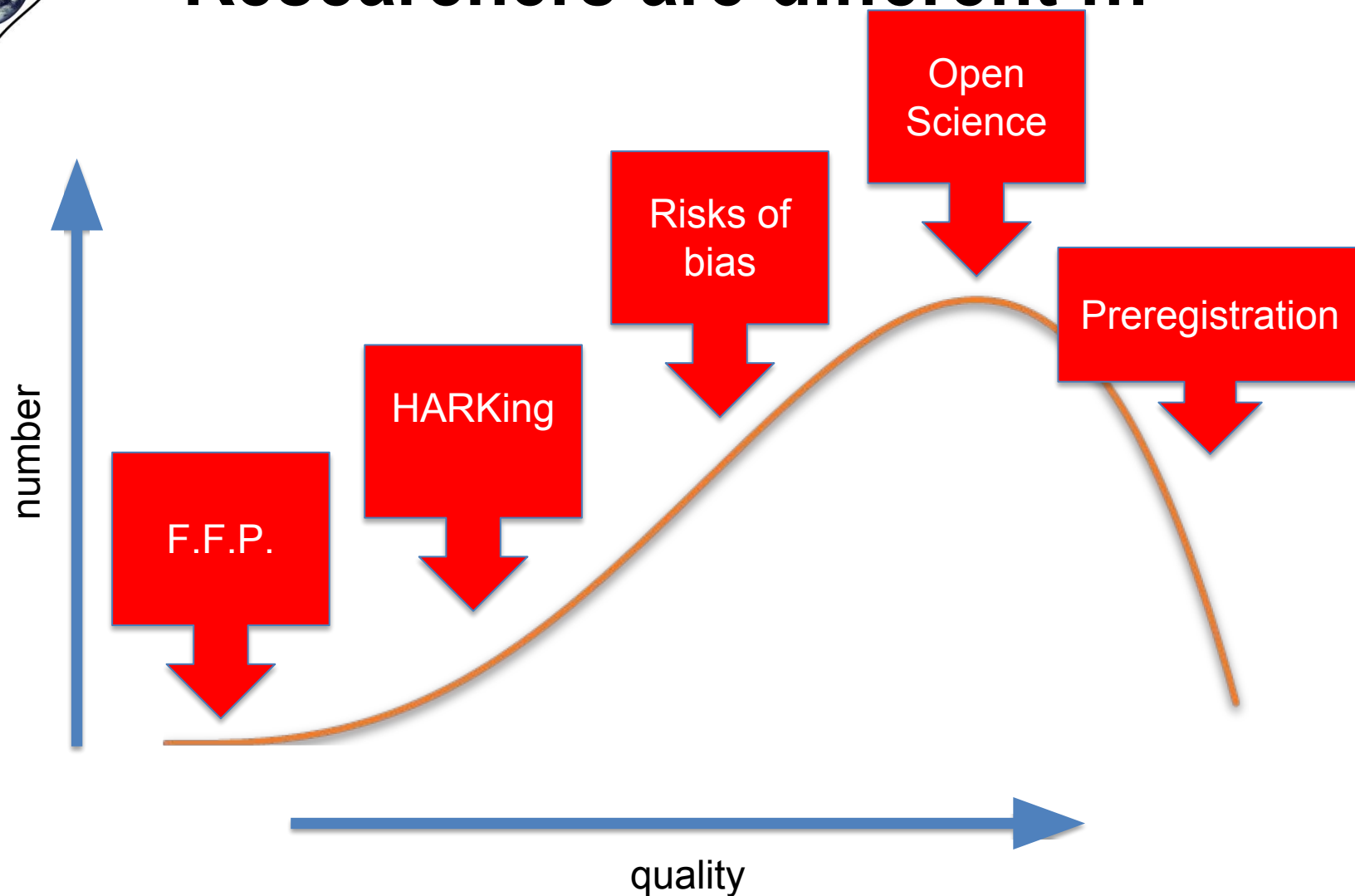


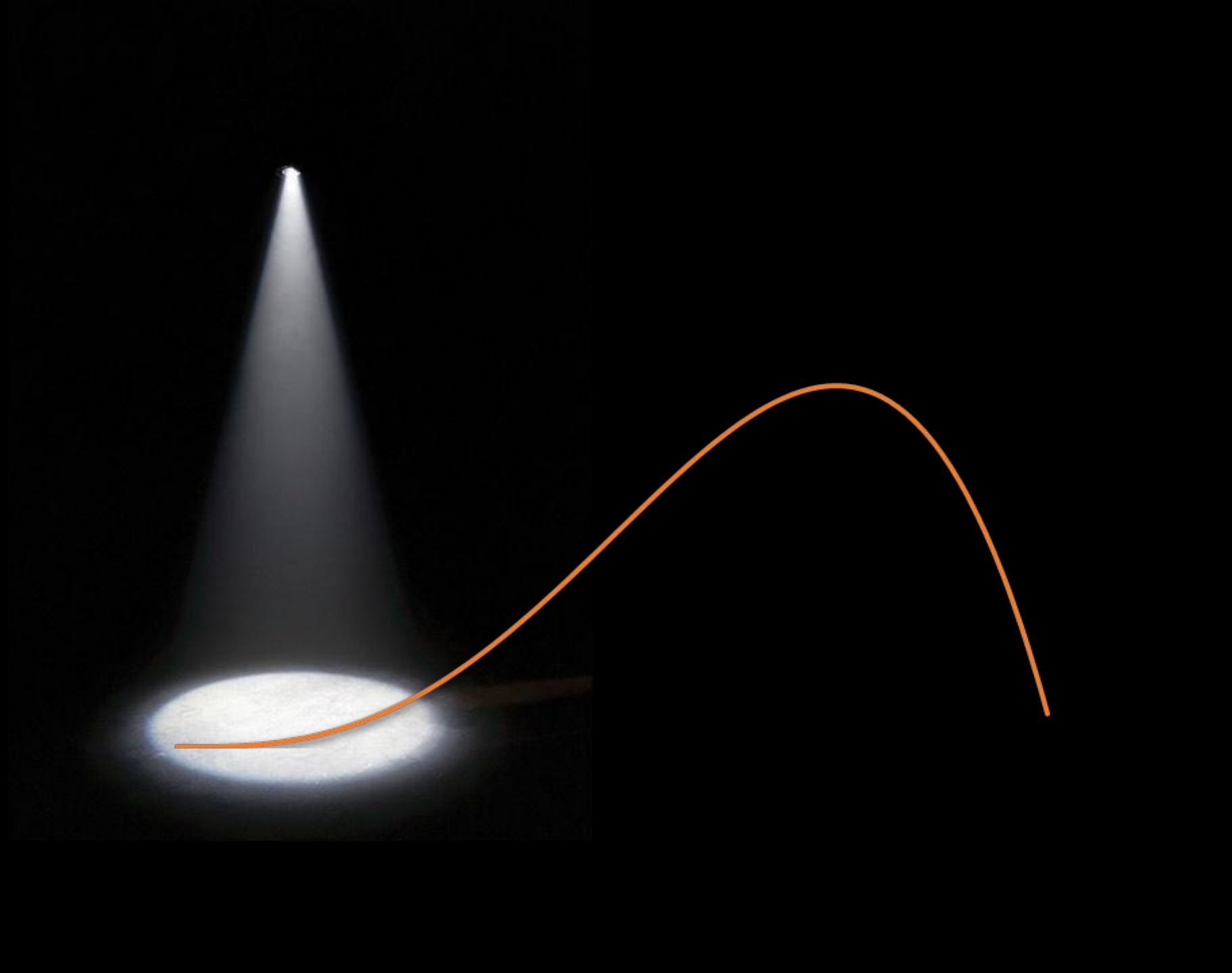
Use of the Morris Water Maze





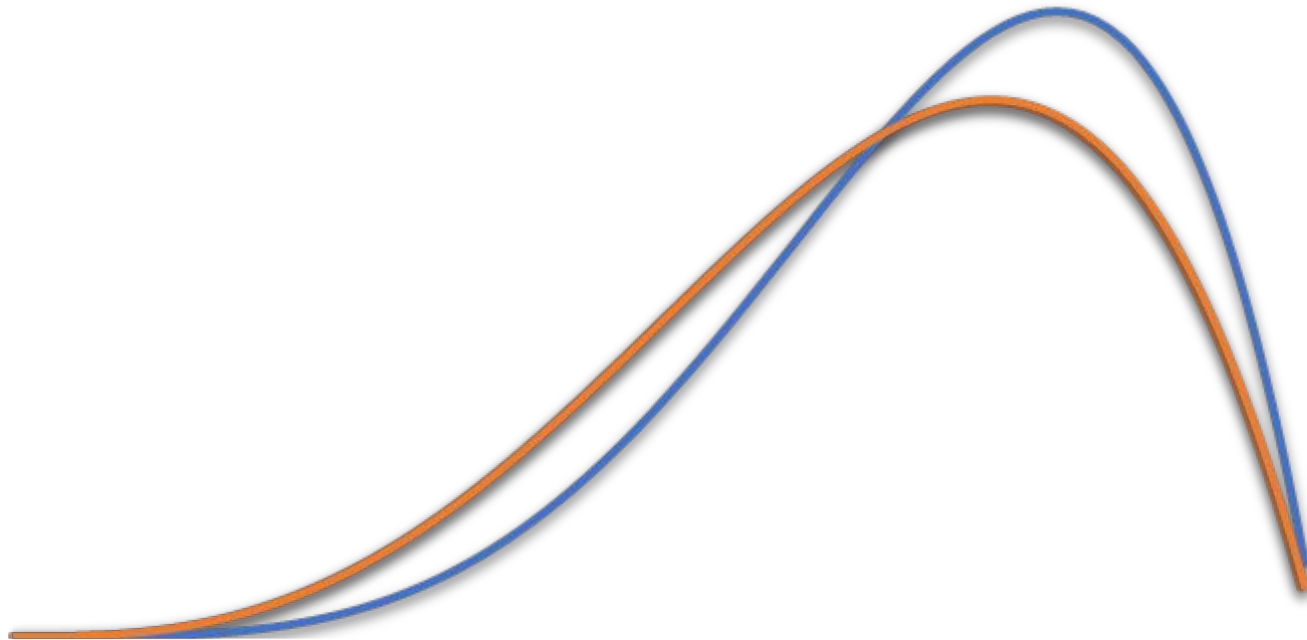
Researchers are different ...







Research Improvement Strategy





If you are planning a systematic review or meta-analysis of animal data, CAMARADES are here to help: malcolm.macleod@ed.ac.uk



CAMARADES: Bringing evidence to translational medicine